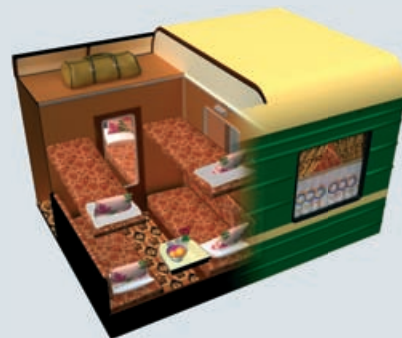


The Categories of Your Transsiberian Private Train

Category I: Standard

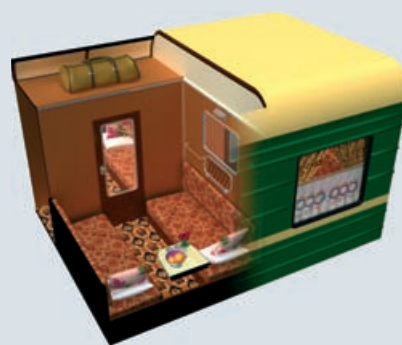
In the STANDARD CATEGORY (I), there are nine compartments per car, each for four guests. On both sides, left and right, there are two berths, one upon the other and each of them sized 2.3 x 6.2 ft (70 x 190 cm). In the middle, below the window, you will find a table. Combined toilet/lavatory compartments are located at each end of the car.



Category II: Classic



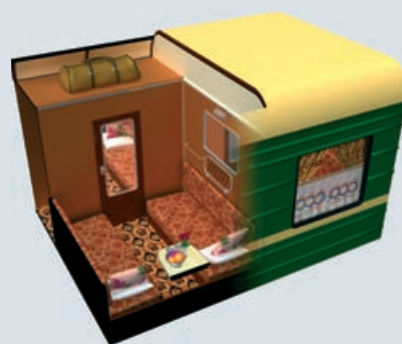
In the CLASSIC CATEGORY (II), there are 9 compartments per car. A compartment is shared by two guests. Berths are sized app. 2.3 x 6.2 ft (70 x 190 cm) and arranged facing each other. There is also a table under the window. Combined toilet/lavatory compartments are located at each end of this category's cars. In every second car there is a shower compartment.



Category II: Superior



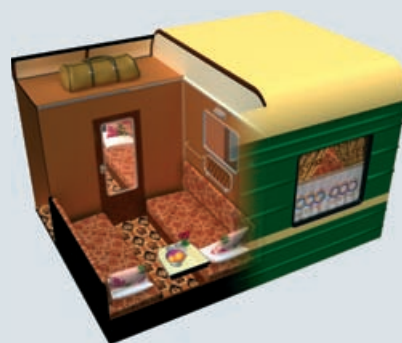
In the SUPERIOR CATEGORY (II), there are 9 newly refurbished compartments per car. A compartment is shared by two guests. Berths are sized app. 2.3 x 6.2 ft (70 x 190 cm) and arranged facing each other. There is also a table under the window. Combined toilet/lavatory compartments are located at each end of this category's cars. In every second car there is a shower compartment.



Category II: Superior Plus



In the SUPERIOR PLUS CATEGORY (II), there are 8 newly refurbished compartments per car. A compartment is shared by two guests. Berths are sized app. 2.3 x 6.2 ft (70 x 190 cm) and arranged facing each other. There is also a table under the window. Combined toilet/lavatory compartments are located at each end of this category's cars. 8 compartments share one refurbished shower room.



Category III: Nostalgic Comfort



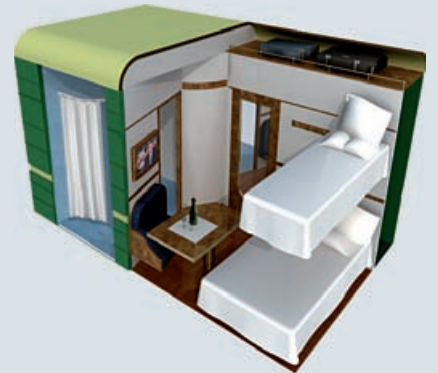
If you want to travel like the red tsars, the NOSTALGIC COMFORT CATEGORY (III) is a must. The newly built cars of our Category III are nostalgically furnished, but also provide modern amenities. You'll be travelling in an ambiance, in which even former Soviet leaders would have felt at home – although with the comfort of the 21st century. Each of these rolling hotel rooms offers two large berths (app. 2.6 x 6.1 ft (80 x 185 cm)) and an armchair for an especially comfortable view of the changing landscapes. Two compartments share one small lavatory with wash basin and wet room style shower facility between every two compartments. Combined toilet/lavatory compartments are located at each end of this category's car.



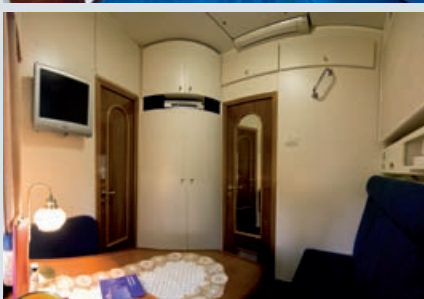
Category IV: Bolshoi



The BOLSHOI CATEGORY (IV) is equipped with two beds: the lower one measures 3.6 x 6.1 ft (1.10 m x 1.87 m), even providing room for two people if required, the upper one 2.6 x 5.8 ft (80 x 176 cm). Furthermore, the 60 sq ft (5.57 m²) large compartments offer a cosy seating bench, a commodious table and a wardrobe. The compartment's exclusive en suite bathroom does not only contain a washing basin, WC and shower, but also enough storage space for your personal belongings. Each car of the Bolshoi category has only six compartments.



Category V: Bolshoi Platinum



The BOLSHOI PLATINUM CATEGORY (V) features the highest possible comfort on the Transsiberian. Each compartment is 77 sq ft (7.15 m²) large and provided with full shower cabin, WC and washing basin. The lower bed measures 3.9 x 6 ft (120 x 184 cm), the upper one 2.7 x 5.7 ft (82 x 174 cm).

The compartment is equipped with a very spacious wardrobe, hair dryer, bathrobe and slippers. Each car of the PLATINUM CATEGORY contains 5 of these magnificent cabins, assuring that there is a maximum of only 10 guests per car.

